



WECKERLE MACHINES SUSTAINABILITY POLICY and REPORT 2025

WE ARE SUSTAINABLE



“We invite you to participate on our thoughts, efforts and goals.”



Dear Friends of Weckerle Machines,

Companies that want to maintain their place on this planet in the future, as well as in the heart of their customers, need to be concerned not only with themselves. Instead, they have to acknowledge their place as part of an extremely sensitive ecosystem – in economic and environmental terms.

In other words, our ethos of “We are Weckerle” obliges us to pay greater attention to the environment than ever in our business activities. Our company can only prosper if everything is going well for our planet and its people. That is why we in our companies devote attention to sustainability going forward. Everyone needs to do their bit, and of course we will all do so together.

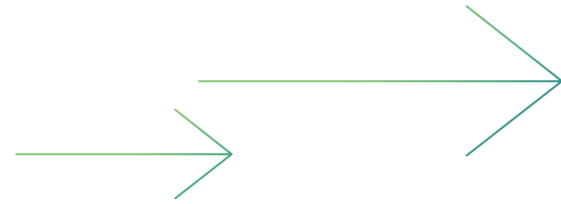
This is based on our Weckerle Sustainability Strategy, which sets out specific targets. Our world doesn’t need any more declarations of intent, but rather deeds. And we are doing something.

We invite you to participate on our thoughts, efforts and goals in this sustainability report you intend to read; and we would appreciate if you share your feedback.

Best regards,
Thomas Weckerle



Our Environmental and Sustainability Policy



Environmental protection and sustainability is an important component of our corporate policy.

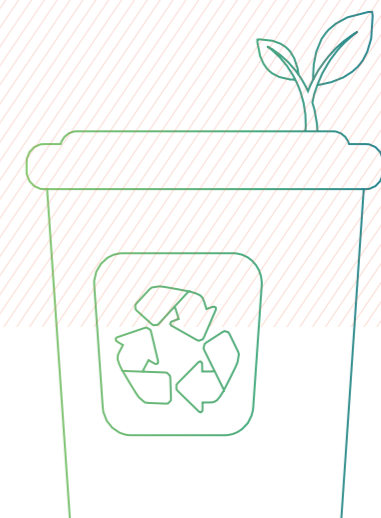
Our goal is to reconcile profitable production and environmental protection.

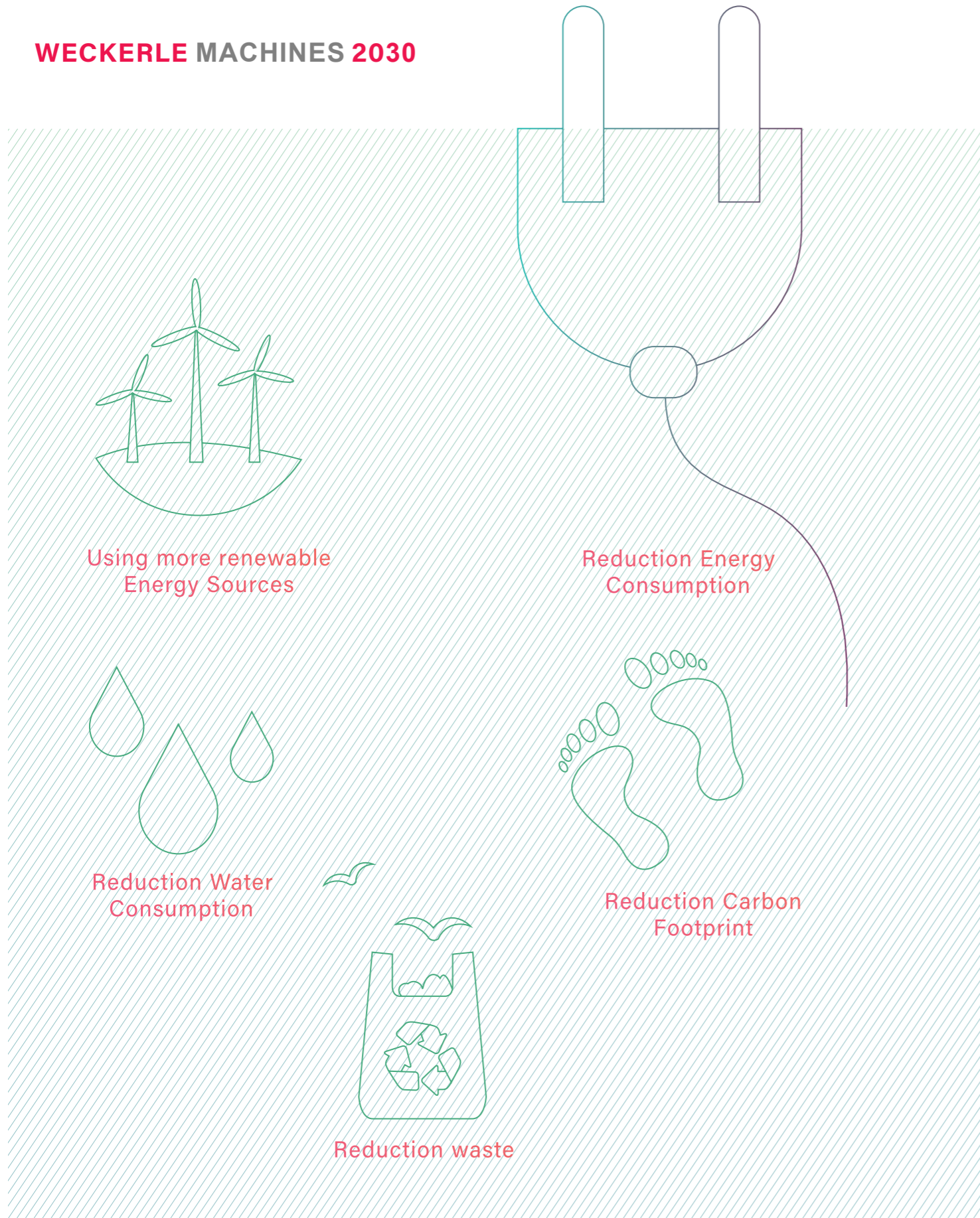
In addition, we are committed to **complying with legal and regulatory requirements** and other environmental interests.

To achieve this, we have established an **environmental management system (EMS)** for the Weckerle Machines site in Weilheim.

We are committed to the **continuous improvement** of this EMS **to improve our environmental performance** and **to prevent or reduce environmental impacts.**

We protect the climate by **reducing our CO2 emissions** and thus helping to improve living conditions on Earth today and in the future. We compensate for CO2 emissions that cannot be avoided by supporting climate protection projects, which always also benefit the everyday lives of people in developing countries. In addition, we participate annually in the CDP (Carbon Disclosure Project).





Our Priorities Operational Footprint

The natural resources of our planet are limited and we act to reduce our Operational Footprint every day.

- ✦ Reduce by 10 % our energy consumption
- ✦ Reduce by 10 % our carbon Footprint
- ✦ Reduce by 10 % our water used
- ✦ Decrease our waste by 10 %

Current Status 2025

We implemented a waste, energy and water management program and we have invested in energy efficiency measures in our facilities.

We are participating at **EcoVadis Rating** since many years. This independent evaluation program provides Corporate Social Responsibility (CSR) ratings of suppliers, to encourage social and environmental activities in order to reduce risks, boost innovations, and create trust and transparency between business partners.

In 2025 Weckerle Machines was granted the Bronze Recognition level. Thanks to this achievement we are amongst the top 35% performers evaluated by EcoVadis.

Our Path to Carbon Neutral Company



We are pleased to announce that Weckerle Machines is officially participating in the **Science Based Target Initiative (SBTi)** since July 2022.

The SBTi is a partnership between CDP, the United Nations Global Compact, the World Resources Institute (WRI) and the World Wide Fund for Nature (WWF).

Science-based targets provide companies with a clearly defined pathway to reduce emissions in line with the goals of the **Paris Climate Agreement**, helping to prevent the worst impacts of climate change and achieve future-proof business growth.

Targets are considered “science-based” if they are consistent with what the latest climate science suggests is necessary to achieve the goals of the Paris Climate Agreement – limiting global warming to well below 2 ° C above pre-industrial levels and pursuing efforts to limit warming to 1.5 ° C.

Weckerle Machines has now officially **committed to this 1.5 degree target**

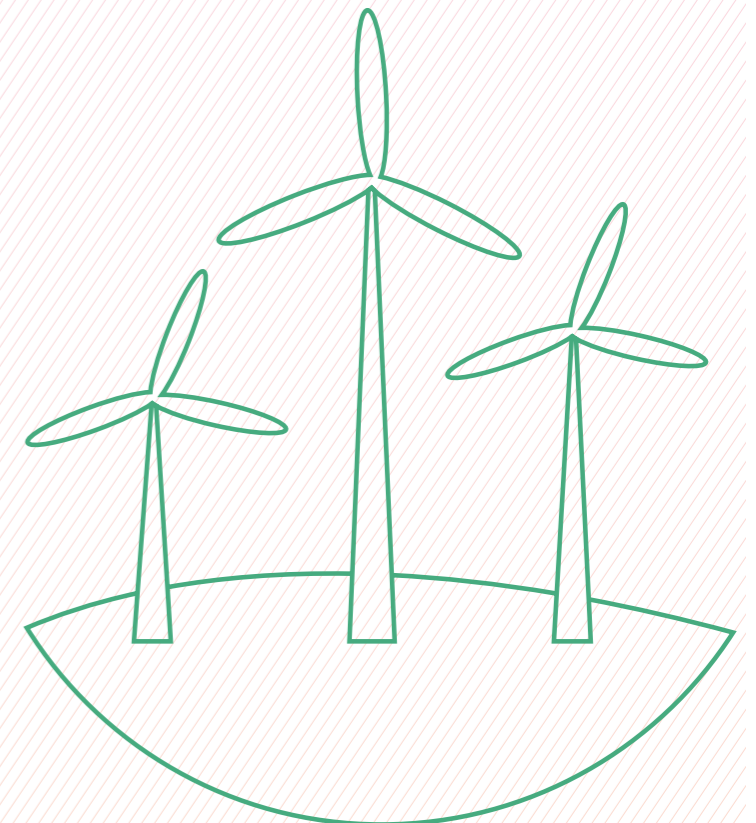
To achieve this we must reduce our Scope 1 & 2 CO2 emissions (electricity, gas and company vehicles) by 46% by 2030 compared to 2019.



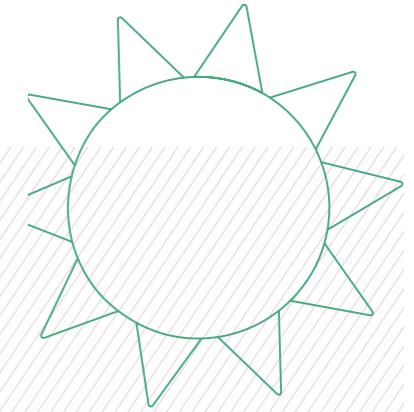
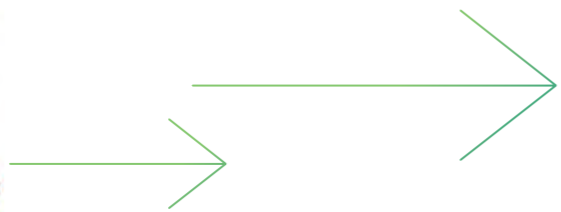
Our Priorities CO2-Emissions

Our Climate Change Strategy

- **CALCULATE CO2:** since many years we participate at the **Carbon Disclosure Project (CDP)**. As a non-profit-organization, CDP discloses the greenhouse gas emission of companies with the target to reduce the worldwide CO2 emissions.
- **REDUCE CO2:** Participating at CDP helps us to find out where we can reduce our CO2-Emissions.



Our Path to Carbon Neutral Company



Our Priorities CO2-Emissions

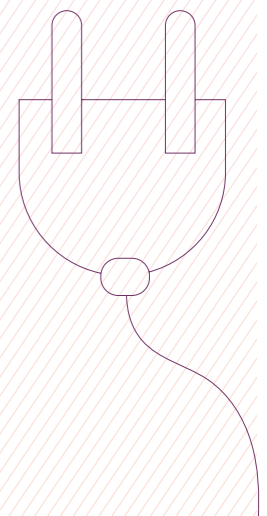
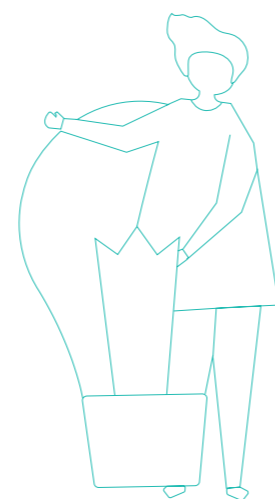
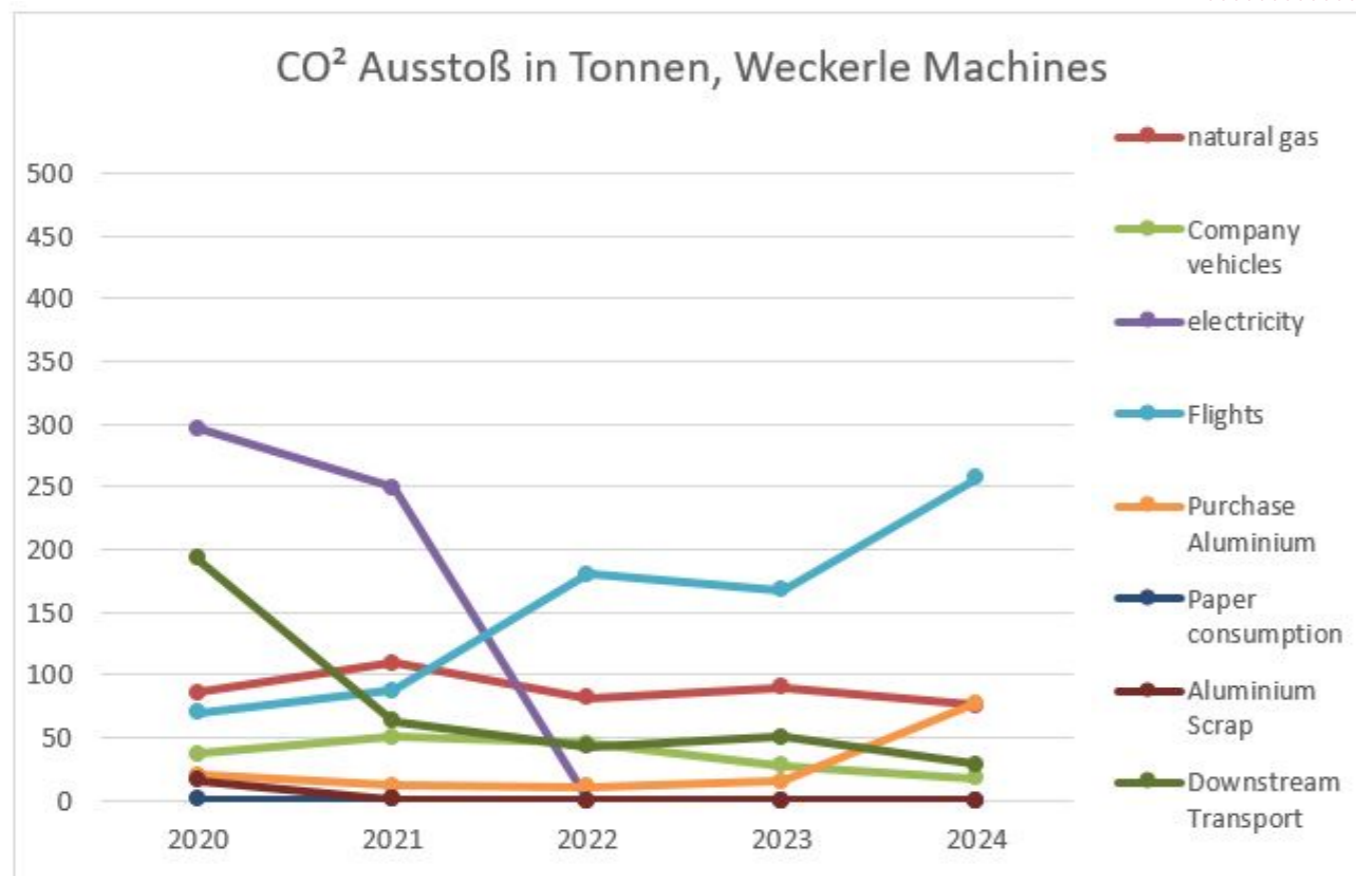
Current Status 2025

CALCULATE:

✦ **CDP:** In 2024 Weckerle Machines received a **B-Score** which is the above the Powered machinery sector average.

REDUCE:

- ✦ Since 01.01.2022 we are sourcing **100% green electricity**.
- ✦ With three **charging stations** at the company site, we are helping to promote electromobility. Moreover new company vehicles were converted to hybrid or electric cars
- ✦ Flexible, **mobile working** from home allows for less commuting. In addition, an attractive **bike leasing** program is available to our employees.



Our Priorities Awareness

As a company, we have a responsibility to work for a future worth living and to anchor sustainability strategically!

We take this responsibility seriously and are pleased to announce that we are since August 2022 a **participant of the United Nations Global Compact**, the world's largest initiative for sustainable and responsible corporate governance.

As a special initiative of the UN Secretary-General, the United Nations Global Compact is a call to companies everywhere to align their operations and strategies with ten universally accepted principles in the areas of human rights, labour, environment and anti-corruption, and to take action in support of UN goals.

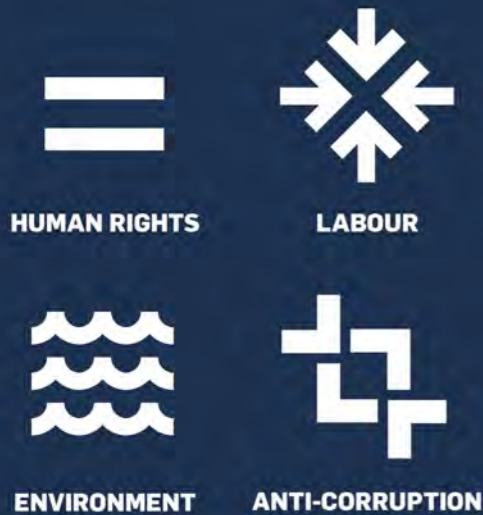
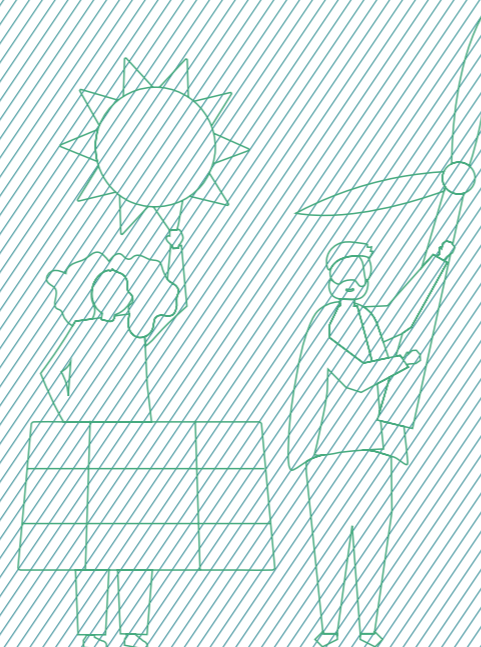
By participating, we are setting an example and committing to the ten principles of the UN Global Compact and the global Sustainable Development Goals (SDGs).

- ✔ Build a team that includes our suppliers and our customers for:
 - ✔ Sustainable innovation
 - ✔ Sustainable supplier self-assessment
- ✔ Ethics and Human Rights Audit program
- ✔ Solidarity Sourcing Projects
- ✔ Regular Training for our Employees
- ✔ 0 accidents

Current Status 2025

In July 2023 we passed the last **SMETA-Audit** (Social Compliance Audit) successfully.

Stating that we are a **Sedex Member** since many years is a great way to show our customers, stakeholders and investors that we are committed to being a responsible business and sourcing responsibly.















OUR COMMITMENT:
MAKE THE UN GLOBAL COMPACT AND ITS TEN PRINCIPLES AN INTEGRAL PART OF OUR BUSINESS STRATEGY, DAY-TO-DAY OPERATIONS AND ORGANIZATIONAL STRUCTURE

#UnitingBusiness



Objectives and Success Indicators

We have aligned our sustainability goals with the 17 Sustainable Development Goals (SDGs) of the United Nations (UN).

SDG	Area	Basis Year 2022	Status 2024	Target 2030	Success Indicator
	Energy consumption	4,12 kWh/ hour	 2,71 kWh/ hour	Reduce by 10 %	Electricity consumption in kWh/ working hours
	Water consumption	7,48 m ³ / hour	 5,91 m ³ / hour	Reduce by 10 %	Water consumption in m ³ / working hours* 1000
	Carbon Footprint	2,23 to/ hour	 2,16 to/ hour	Reduce by 10 %	Annual CO2 consumption in to / working hours*1000
	Waste	0,22 to/ hour	 0,26 to/hour	Reduce by 10 %	Waste volume in to / working hours*1000
	Average of Safety training	1,33 hour/ employee	 2,99 Std/ employee	4hours	Amount of training hours per year and per employee
	Employees Safety	4 accidents	 2 accidents	0 accidents	Number of Accidents per year



Contacts

machines@weckerle.com

Website

<https://www.weckerle.com/machines/sustainability/>

Follow Weckerle Companies

[Yo uTub e](#)

Credits

Published by

Weckerle GmbH

Holzofstr. 26 | 82362 Weilheim

+49 (0) 881 92930

Editorial work and coordination

Martina Becht

Publication date of this report

05/12/2025

weckerlemachines